



MALIBU

2,410 SQ. FT.



CareFreeHomes.com



In a continuing effort to improve our product, CareFree Homes reserves the right to make changes or modifications to floor plans, specifications, materials, features and colors without notice. Window styles, availability, sizes and locations as well as ceiling heights and vaults and livable square footage will vary with choice of exterior elevations. All floor plans and lot square footages are approximate only. Total plan square footage calculations are from the outside of exterior walls and include interior partition walls. Optional features may be included at additional costs and are subject to construction cutoff dates. Lot premiums and HOA fees may apply. All maps, plans, landscaping and color elevation renderings are artists' conceptions and is for demonstration purpose only. Exterior stone is optional. Exterior stone placement, landscaping, and stucco color combinations may vary. This presentation constitutes intellectual property of CareFree Homes. Any copying, reproduction or use of this information without the written authorization of CareFree Homes is strictly prohibited. Prices are subject to change without notice. Consult a Sales Associate for additional information.

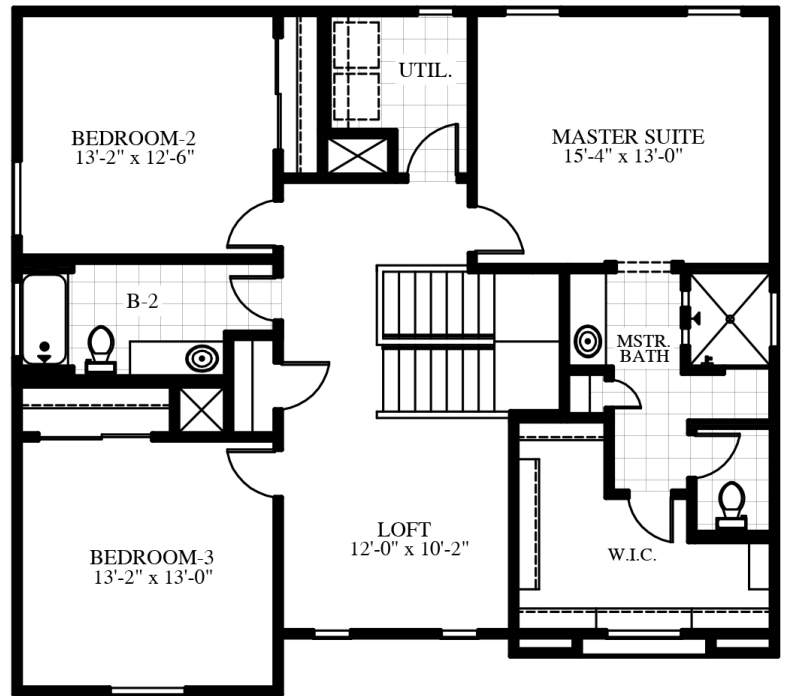
3.14.24



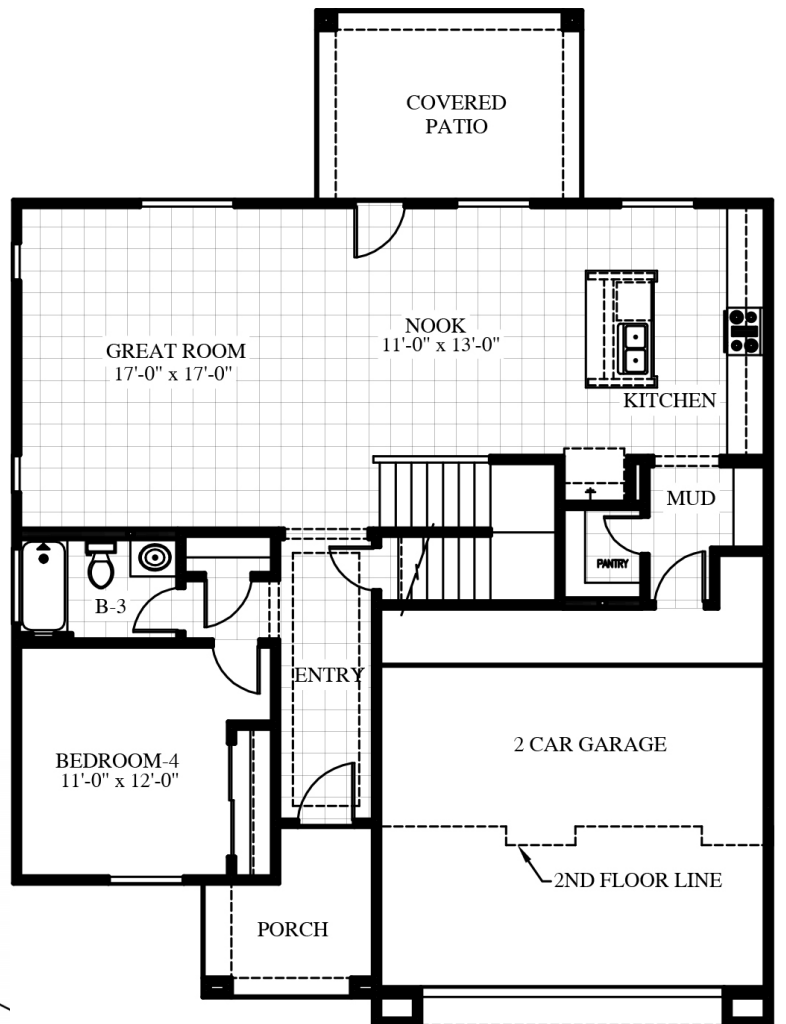
MALIBU

2,410 SQ. FT.

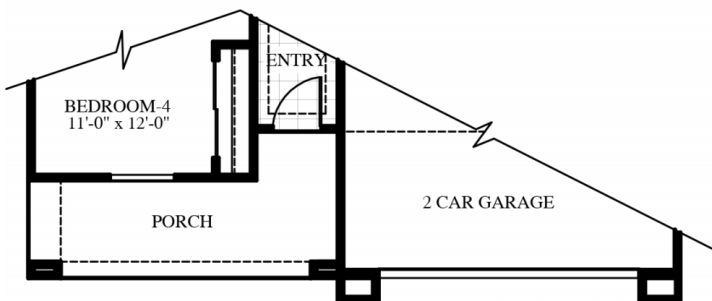
- Two-Story
- 4 Bedrooms
- 3 Baths
- Nook
- Great Room
- Loft
- Mud Room
- Utility Room
- Covered Patio
- 2-Car Garage



SECOND FLOOR



FIRST FLOOR



ELEVATION B FIRST FLOOR PLAN