

TRIUMPH II

2,819 SQ. FT.



DESERT MODERN
ELEVATION
(SHOWN WITH BALCONY OPTION)



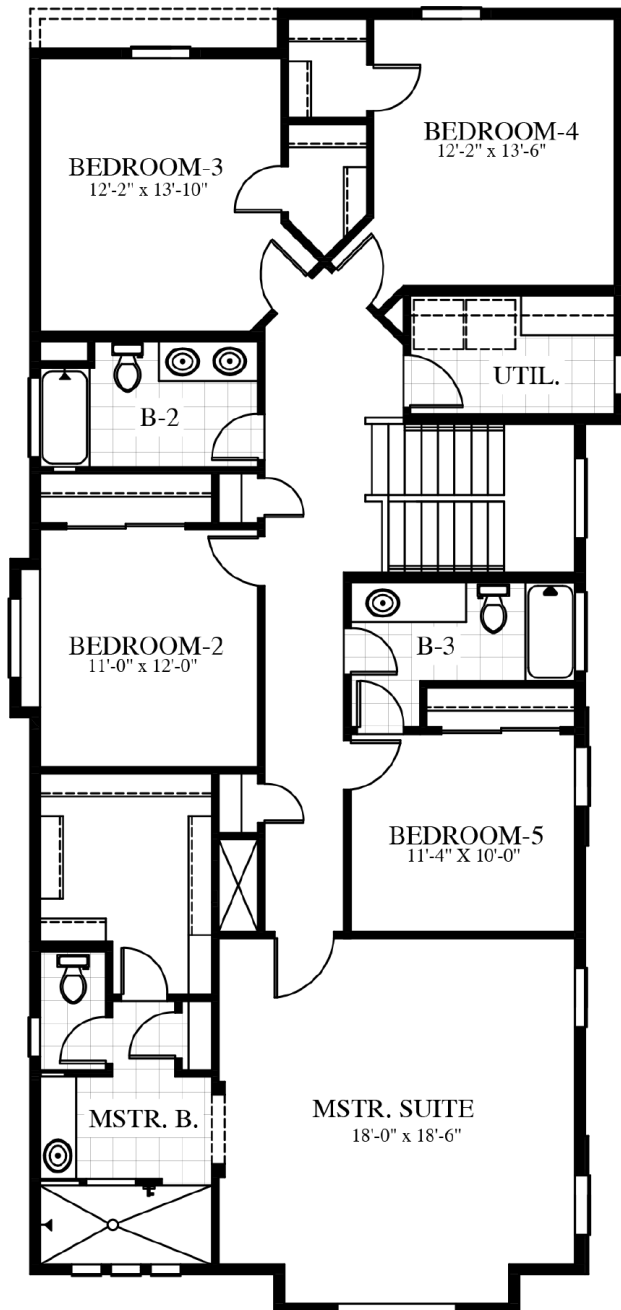
DESERT TERRITORIAL
ELEVATION



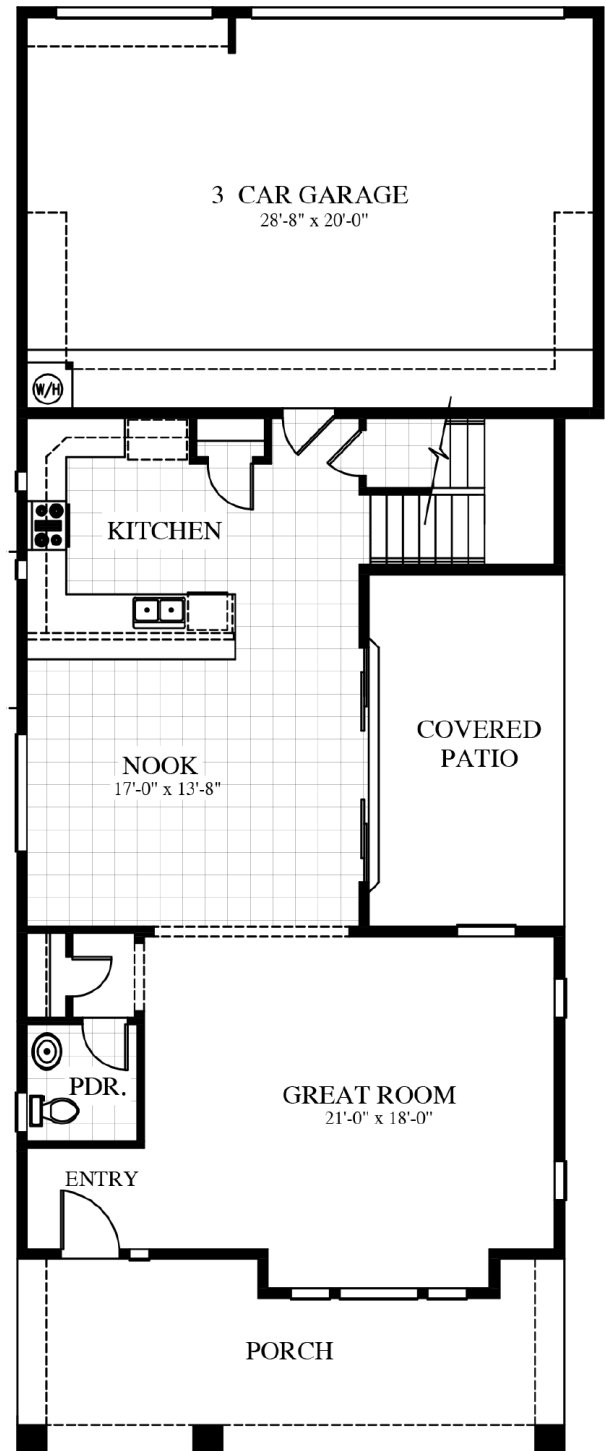
SPANISH MISSION
ELEVATION

TRIUMPH II

2,819 SQ. FT.



SECOND FLOOR



FIRST FLOOR

- Two Story
- 5 Bedrooms
- 3 1/2 Baths
- Nook
- Great Room
- Utility Room
- Covered Patio
- 3-Car Garage

Showcase feature

- 12' Sliding Glass Door
- Built-in Shelving & Epoxy Floor in Garage