

TRIUMPH

2,708 SQ. FT.



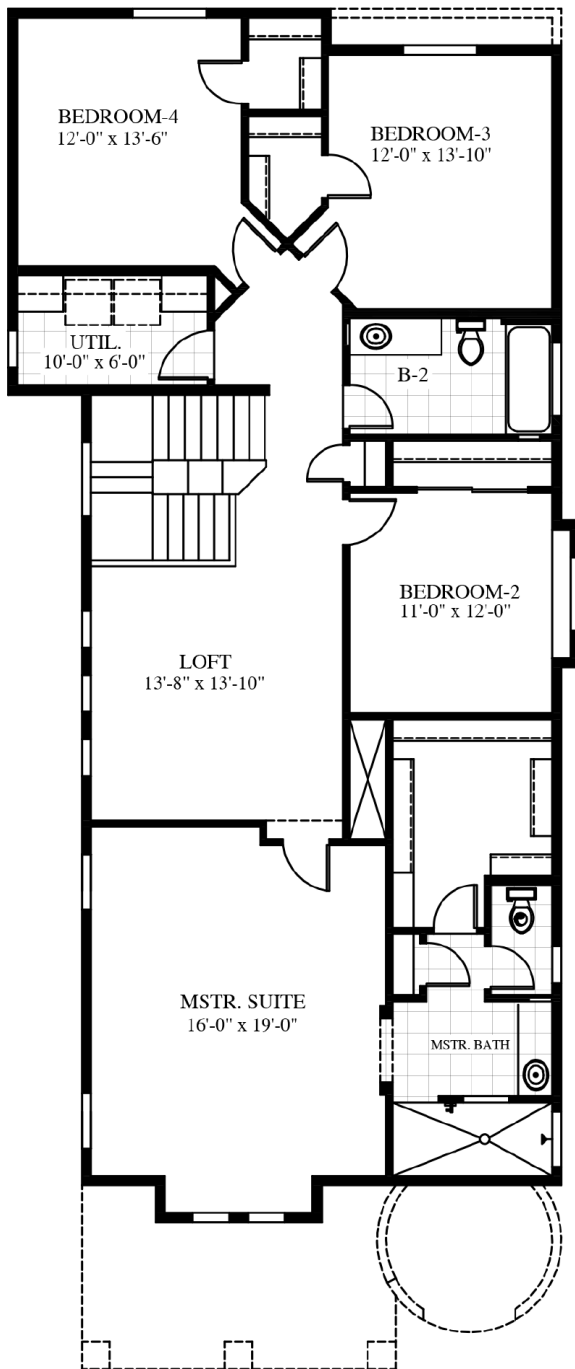
DESERT TERRITORIAL ELEVATION



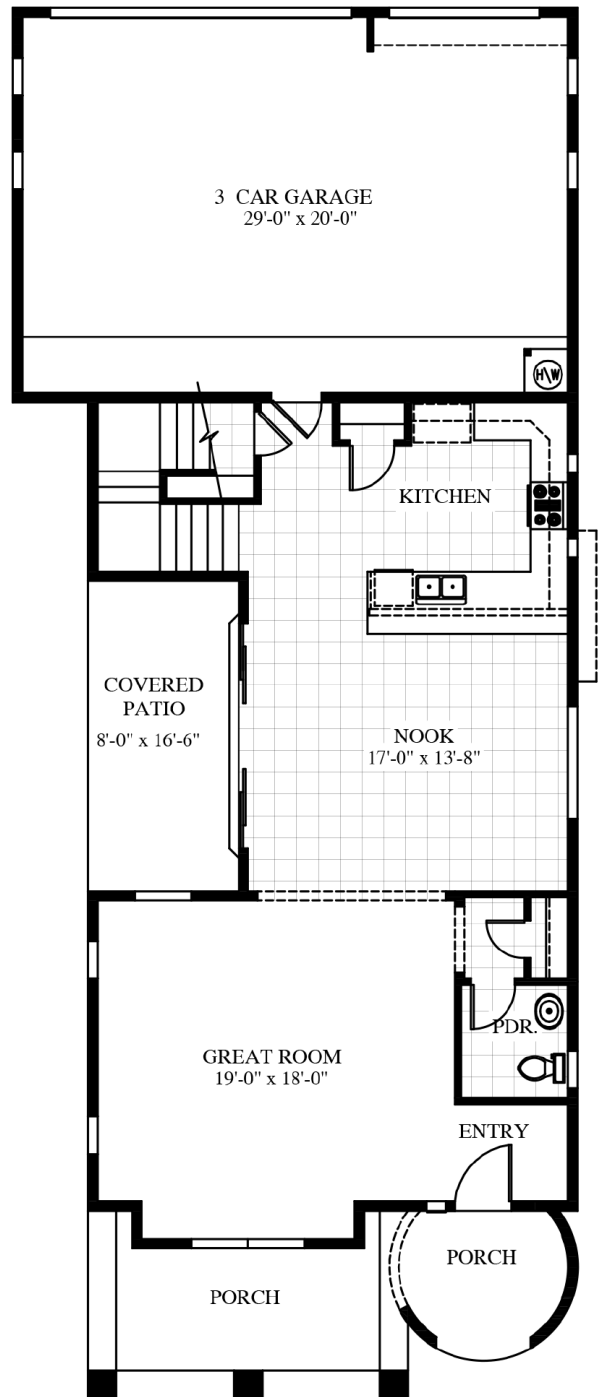
SPANISH MISSION ELEVATION

TRIUMPH

2,708 SQ. FT.



SECOND FLOOR



FIRST FLOOR

- Two Story
- 4 Bedrooms
- 2 1/2 Baths
- Nook
- Great Room
- Loft
- Utility Room
- Covered Patio
- 3-Car Garage

Showcase feature

- 12' Sliding Glass Door
- Built-in Shelving & Epoxy Floor in Garage